



Actuator Technology Company

Energieweg 28, 2382 NK.The Netherlands
www.atc-actuators.com
sales@atc-actuators.com
+(31) 88 0551100

About Us

With over two decades at the forefront, ATC specializes in field proven actuation solutions for the gas, oil, and mining industries. As a privately-owned company with a global perspective, we aim to empower our clients with innovative, high-end solutions to thrive in this ever-challenging landscape.

ATC prioritizes customer satisfaction, ensuring fluid communication, guidance, and support throughout the entire project process and after-sales. We provide essential design assistance during the FEED and detailed design stages (EPC), along with worldwide service and on-site support.

Committed to a straightforward ethos, we conduct our business with clarity and transparency.

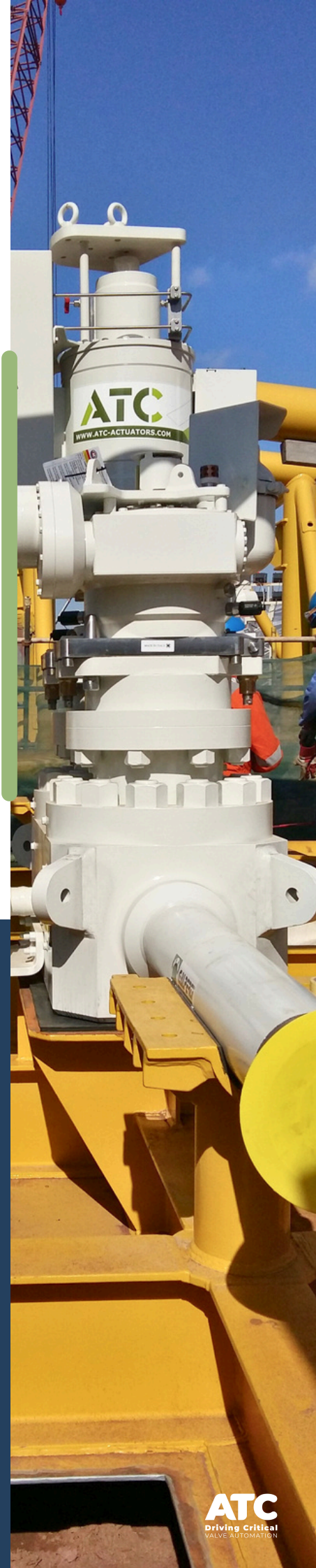
- **Market leader**
- **Field-proven technology**
- **Europe-based production**
- **Privately owned and independent company**

Vision

Based on our leading experience and proven compact valve actuation technology, rooted in Dutch engineering excellence and a global mindset, we aim to empower our clients with the high-end solutions they need to succeed and grow in the dynamic landscape of mineral and energy resources production.

Mission

ATC is committed to excellence and providing innovative, reliable, and value-added actuation solutions that optimize ownership costs, life cycle costs, efficiency, and safety in the production of mineral and energy resources.

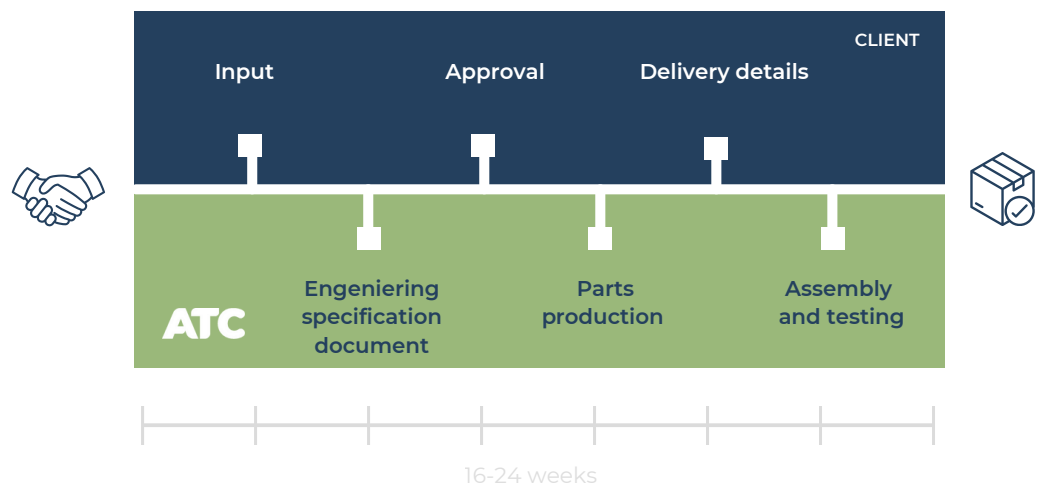


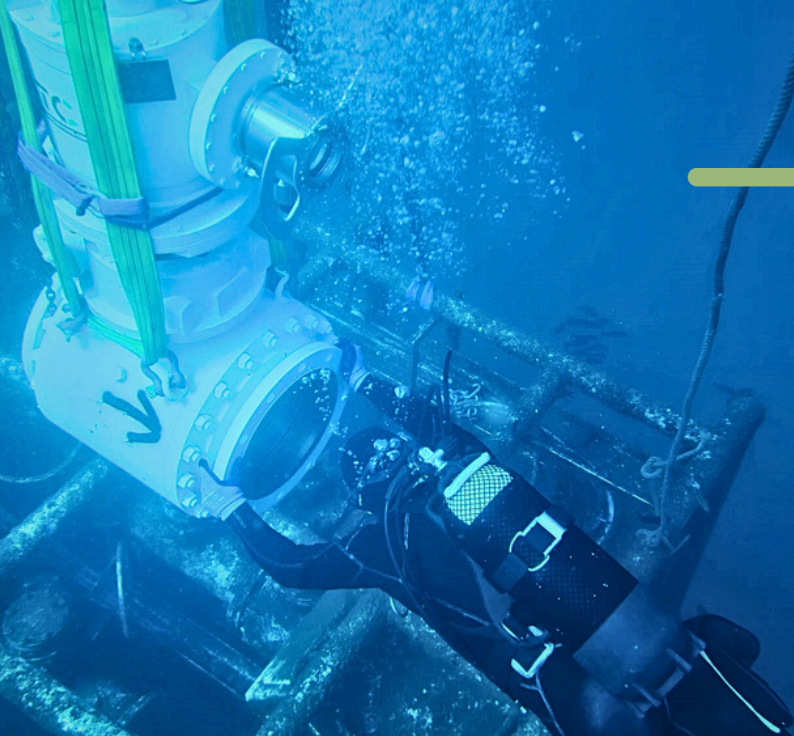
What We Do

We design and manufacture proven technology with a full range of compact actuators to operate quarter-turn valves from subsea deep to onshore, as well as gearboxes and **complements**. We are your compact valve actuation partner to provide essential support, minimize space, weight and cost at new and existing facilities.

We specialize **on quarter-turn actuators and gearboxes for:**

- **Subsea / Splashzone / Temporary submerged / Ballasting systems**
- **Onshore Mining / Petrochemicals**
- **Offshore Production Platforms / WHP / CPP / FPSO**

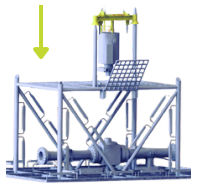




Subsea

ATC offers a full range of subsea valve actuators (and complements) based on diver-to-ROV accessibility and interfacing. We have the engineering capacity and flexibility to meet ever-changing subsea specifications. ATC compact valve actuators are suitable for shallow water, deep sea and ultra deep sea.

Torque-efficient helical slot-type design.
Cylindrical shaped compact design.
Manifold/SSIV/PLEM skid layout optimization.
Installed base to 3 km/10,000 ft water depth.
Full range available of spring return and double acting subsea actuators (no torque limitation).
In-house hyperbaric & PR2(F) testing.



Upstream

Due to the accelerated growth in Oil & Gas production flows and pressures, there is an increasingly urgent need for compact actuated valve solutions to optimize piping lay-out and to limit weight and cost. For this reason, ATC valve actuators are installed on greenfield and brownfield projects worldwide. ATC design allows reductions in pipe length in FEED and detailed design, resulting in cost- and weight savings.

Lower displacement, contributing to size and weight reduction of HPU (hydraulic).
Common power pack can be applied for both subsea and topsides valves (reducing footprint & cost).
Advanced weight saving.
Customized torque curve output.
Alternative materials: 316 or better.



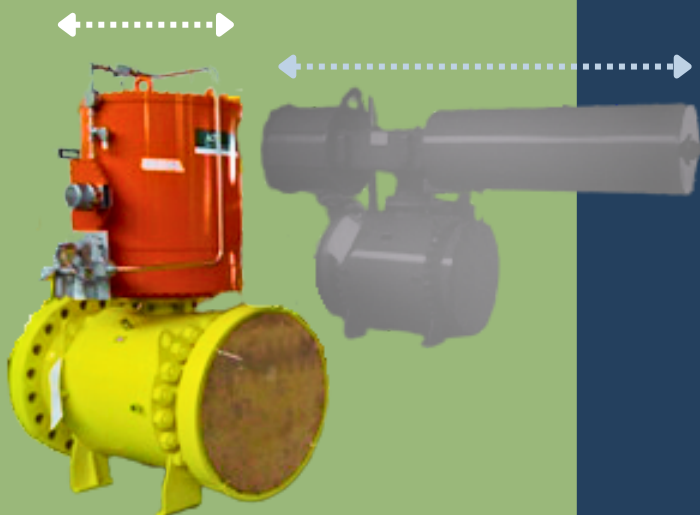
On-shore

Due to its innovative yet simple design, the ATC compact actuator is based on a minimum number of parts. As a result, maximum reliability is ensured throughout our entire range. By default, ATC compact actuators are hermetically sealed, air- and watertight under all conditions from subsea deep to onshore applications. **Material handling / easy installation**

Compact design

Helical slot type actuators, like ATC design, are based on a revolutionary low friction torque conversion mechanism, which exactly matches the valve torque characteristic (red line), reducing actuator displacement up to 50%. Its considered advantageous that these designs are self lubricating and do not require periodic lubrication or grease injection.

The helical spline, rack & pinion and helical slot type of ATC compact design are preferred to match the installation space constraints, minimize the number of parts, integrate all functions (torque transmission, piston, spring) in a single casing so increasing the overall reliability.



Compact design resulting is **space savings up to 300%.**

ATC actuators generally remain within F-F of the valve.

Centre point of gravity in line with valve stem, improving subsea retrievability.

Flexible design - HxD can be modified to project specifications

Multi directional actuator mounting.

Low friction type design.

SIL 3 Type A (field proven) as a standard.

Cost savings in engineering stage, construction and operations (cost of ownership).

ATC is valve neutral.





ATC worldwide deliveries in 2023



40.000+

Combined years
of actuators in operation

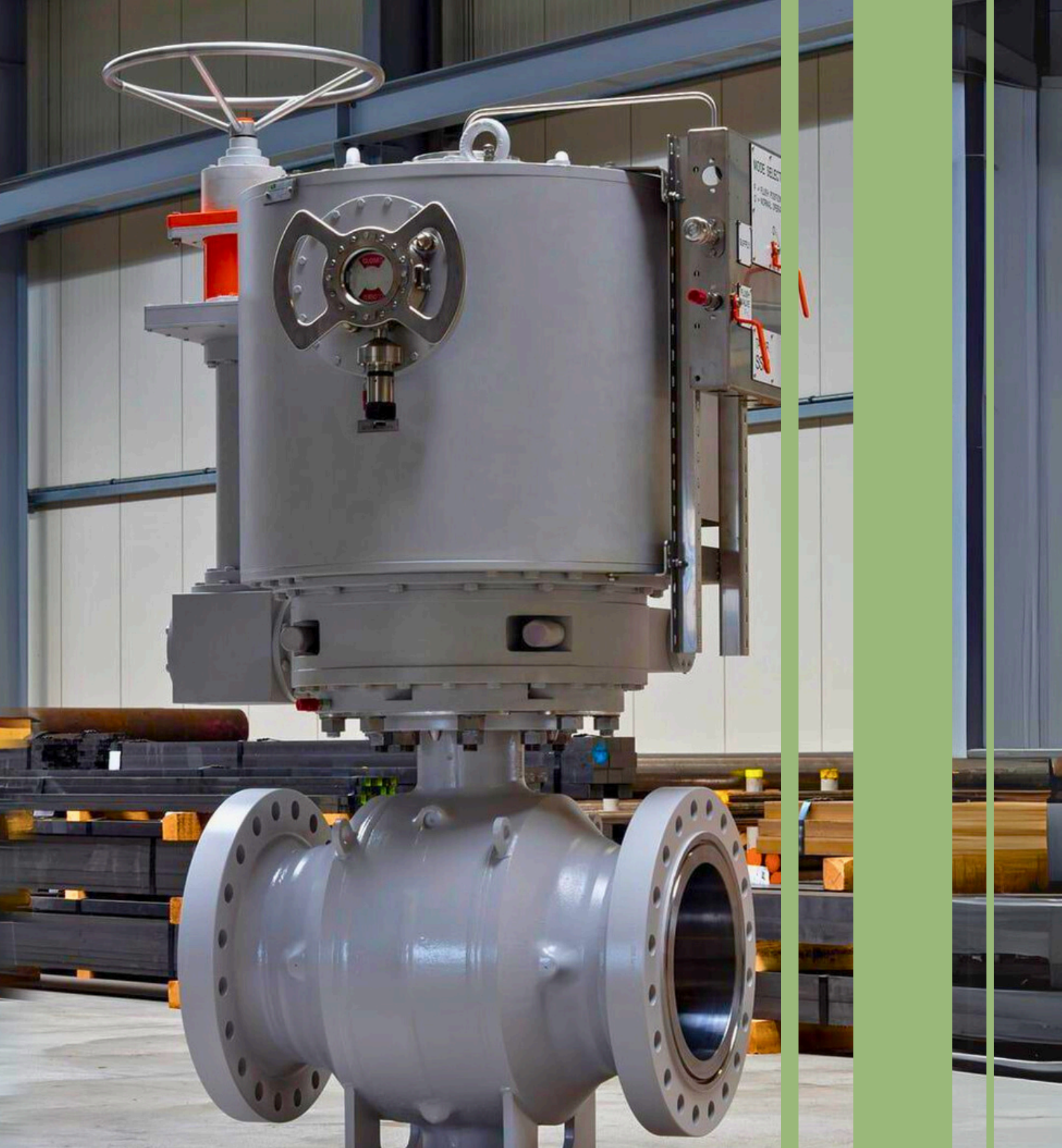
1000+

Completed
projects

20+

Years
of experience





ATC **Driving Critical**
VALVE AUTOMATION

Actuator Technology Company

Energieweg 28, 2382 NK The Netherlands
www.atc-actuators.com
sales@atc-actuators.com
+(31) 88 0551100